

Scotian  
Stories  
No 1 of 7



# TREE POCKET SCARF



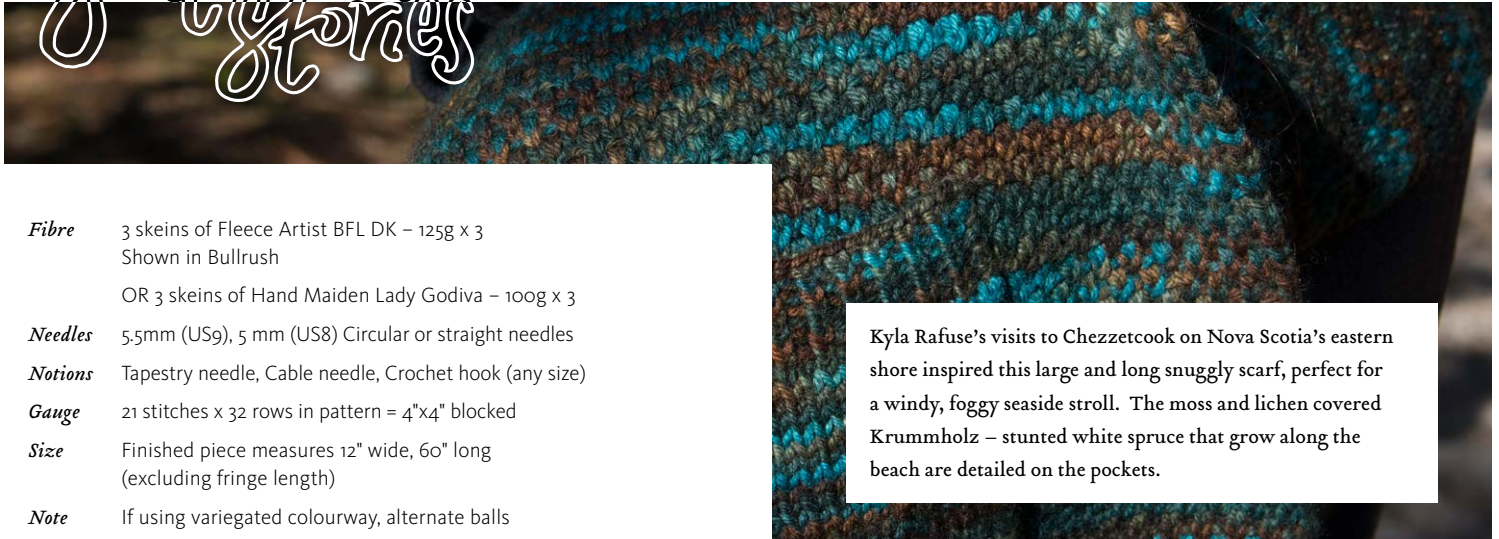
A large and long snugly seaside stunted white spruce scarf

by KYLA RAFUSE for

3 skeins of Hand Maiden Lady Godiva  
OR 3 skeins of Fleece Artist BFL DK



HAND MAIDEN  
fine yarn



Kyla Rafuse's visits to Chezzetcook on Nova Scotia's eastern shore inspired this large and long snuggly scarf, perfect for a windy, foggy seaside stroll. The moss and lichen covered Krummholz – stunted white spruce that grow along the beach are detailed on the pockets.

- Fibre** 3 skeins of Fleece Artist BFL DK – 125g x 3  
Shown in Bullrush  
OR 3 skeins of Hand Maiden Lady Godiva – 100g x 3
- Needles** 5,5mm (US9), 5 mm (US8) Circular or straight needles
- Notions** Tapestry needle, Cable needle, Crochet hook (any size)
- Gauge** 21 stitches x 32 rows in pattern = 4"x4" blocked
- Size** Finished piece measures 12" wide, 60" long (excluding fringe length)
- Note** If using variegated colourway, alternate balls

## PATTERN

Using 5,5mm needles, cast on 63 stitches using the long tail method.

Row 1: Knit (RS)

Row 2: K1, P1 \*SL1WYIB, P1\* P1

Row 3: Knit

Row 4: K1, SL1WYIB \*P1, SL1WYIB\* P1

Repeat Rows 1-4 until scarf measures 60" or desired length, cast off.

Note: each additional inch will require approximately 8m/8.2yds/3g.

(Chart and Long form provided)

### Pockets – make 2

Using 5mm needle, Cast on 20 sts using long tail method.

When knitting flat, charts are read from right to left on the right side (odd rows) and left to right when knitting on the wrong side (even rows).

(Chart on next page)

### Long Form

Row 1: Knit (RS) Row 2: Purl

Row 3: KFB, Knit to last stitch, KFB (22 sts)

Row 4: Purl

Repeat Rows 3-4 2 more times. You will now have a total of 26 stitches.

Row 9: Knit

Row 10: Purl

Row 11: K8, SL1, K8, SL1, K8

Row 12: Purl Repeat

Rows 11-12 2 more times.

Row 17: K4, C2F, K2, SL1, K2, C2B, C2F, K2, SL1, K2, C2B, K4

Row 18 (and all even numbered rows): Purl

Row 19: K5, C2F, K1, SL1, K1, C2B, K2, C2F, K1, SL1, K1, C2B, K5

Row 21: K6, C2F, SL1, C2B, K4, C2F, SL1, C2B, K6

Row 23: K8, SL1, K4, C2F, K2, SL1, K2, C2B, K4

Row 25: K5, C2F, K1, SL1, K1, C2B, K2, C2F, K1, SL1, K1, C2B, K5

Row 27: K6, C2F, SL1, C2B, K4, C2F, SL1, C2B, K6

Row 29: K8, SL1, K8, SL1, K8

Row 31: K14, C2F, K1, SL1, K1, C2B, K5

Row 33: K15: C2F, SL1, C2B, K6 Row 35: K17, SL1, K8

Knit in stockinette until pocket measures 6.5".

Row 1: K1TBL, P1TBL

Row 2: P1TBL, K1TBL Work in twisted rib,

Repeating Rows 1-2 for 1" Bind off loosely in pattern.

Repeat for your second pocket!

### Fringe

Cut 64 strands measuring 12" long.

Hold 2 strands of yarn together, fold in half, ensuring all ends are even.

Poke crochet hook into first stitch along cast on edge. Put the crochet hook through the loop you've created with the folded yarn, pull through and loop ends through the hole you've created. Pull taut. Repeat, inserting crochet hook into every second stitch.

### Finishing

Block scarf and pockets prior to sewing them on.

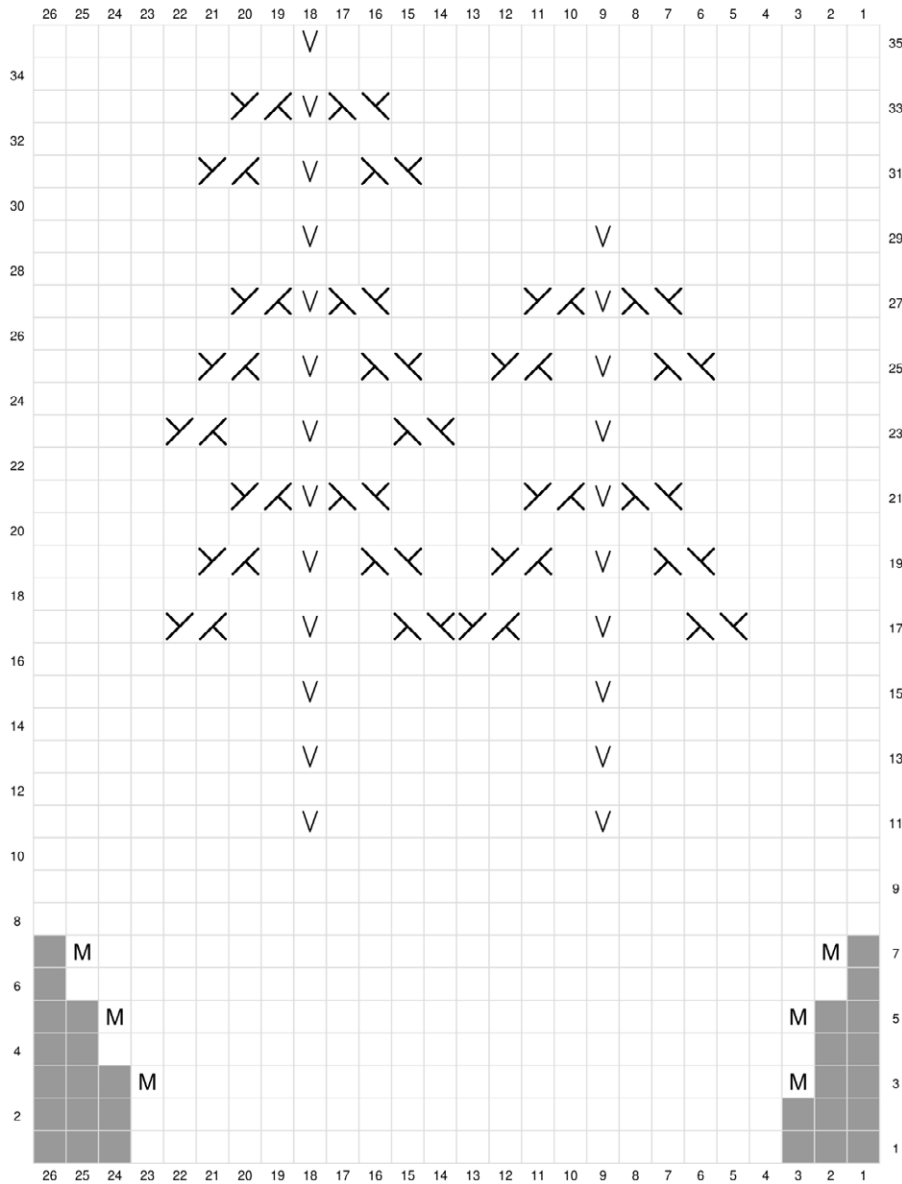
Pin your pockets 1 1/2" from cast on edge and centered

(~3 1/2" from each edge)

Using a whip stitch, sew your pocket along the bottom and both sides (tip: if you blocked using blocking mats, attach pockets while the scarf is still pinned down to make your life easier when centering and to keep it in place while you sew.)



Chart



- RS: Knit  
WS: Purl
- Slip 1 stitch to cable needle, hold in front of work, knit one of left hand needle, knit one from cable needle.
- Slip one stitch to cable needle, hold in back of work, knit one stitch from left hand needle, knit one stitch from cable needle
- No stitch
- Knit into the front and back of stitch
- Slip 1 stitch knitwise

### ABBREVIATIONS:

- \* repeat to end of row
- RS** right side
- WS** wrong side
- Sts** stitches
- K1** knit one
- P1** purl One
- SL1WYIB**  
slip 1 stitch purl wise with yarn in back
- KFB** knit into the front and the back of the stitch (increase by 1 stitch)
- SL1** slip 1 stitch knit wise
- C2F** cable 2 front, slip 1 stitch onto a cable needle, hold in front of work. Knit one stitch from left hand needle, then knit 1 stitch from cable needle.
- C2B** cable 2 back, slip 1 stitch onto a cable needle, hold in back of work. Knit one stitch from left hand needle, then knit 1 stitch from cable needle.
- K1TBL** knit 1 stitch through the back loop.
- P1TBL** purl 1 stitch through the back loop.